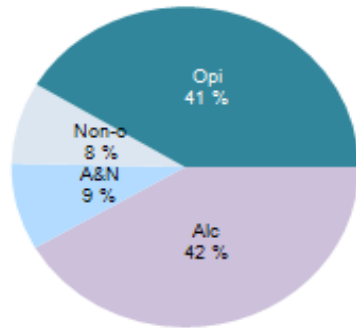


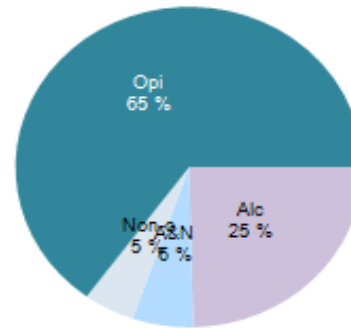
Stockton Quarterly Performance Report to SSP 2015/16 Q2

David Morton 23/11/15

New Presentations - Year To Date

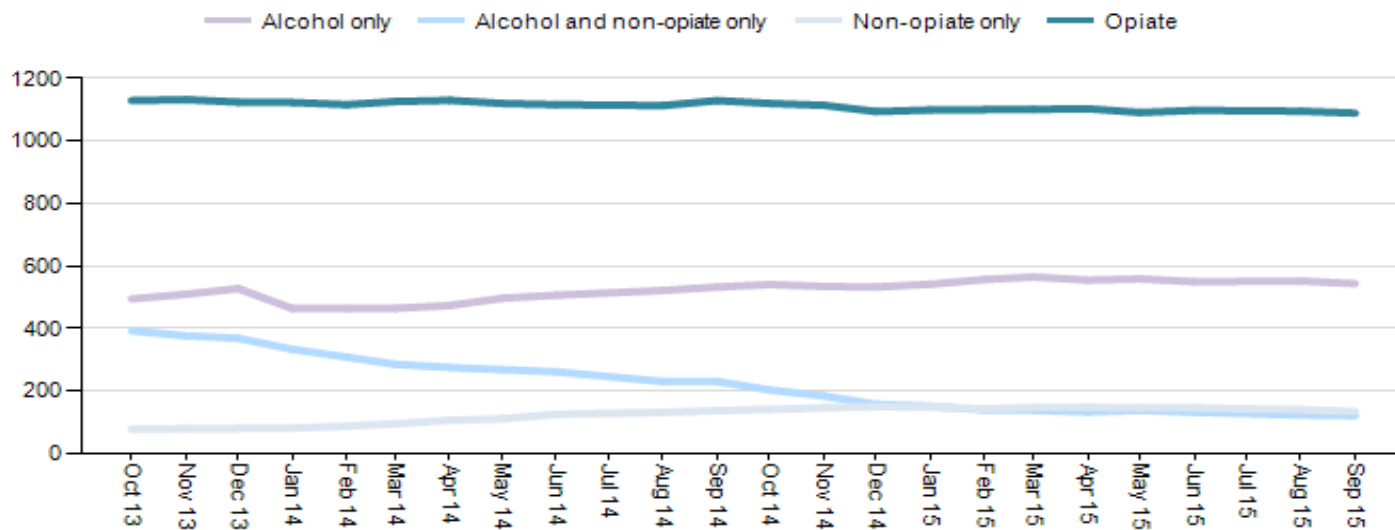


All In Treatment - Year To Date



Substance Category	New Presentations	All in treatment
Alcohol only (Alc)	171	378
Alcohol and non-opiate only (A&N)	36	87
Non-opiate only (Non-o)	34	73
Opiate (Opi)	170	997
Total Clients	411	1535

Number in Treatment (Rolling 12 months)



The proportion of opiate clients has increased from 63% in Q2 2014/15 to 65% in Q2 15/16. This is largely due to a fall in the number of Alcohol and non-opiate clients. On a rolling 12 month measure, the numbers in treatment have remained fairly stable with the reduction in combined alcohol and non-opiate use leveling off in Feb 2015 after a significant reduction before then. The total numbers currently in treatment is 5.8% lower than Q2 2014/15. Opiate numbers are down only 1.6%, alcohol only down 5.5%, non-opiate down 6.4%. However alcohol and non-opiate are down 31.5%.

	number in treatment	%
2 Top ten substances for those in treatment		
1 Opiates	997	65%
2 Alcohol	675	44%

Commentary

Drug use is no longer reported as primary and secondary use. Numbers are now a collation of all cited drug use. Therefore the numbers quoted can not be added together as they include poly drug use. This method does show a more holistic view of the range of substances used by all those in drug and/or alcohol treatment. As a result of falling non-opiate and alcohol & non-opiate users, the proportion of users citing Opiate use has increased from 41% to 65% in last twelve months. Alcohol use has fallen from 48% to 41%.

3 Cannabis	330	21%
4 Benzodiazepines	235	15%
5 Cocaine	159	10%
6 Amphetamine	77	5%
7 Other drugs	57	4%
8 prescription drugs	14	1%
9 Ecstasy	10	1%
10 Crack	4	0%

		Apr-15	May-15	Jun-15	Aug-15	Sep-15
3 Successful completions	Opiate	5.35%	4.50%	4.80%	5.60%	5.50%
	Number of opiate exits	59	53	53	61	60
	As a proportion of all in treatment (rolling 12 month period)	47.97%	31.70%	34.10%	32.60%	35.90%
	Non Opiate	148	105	105	93	104
		Apr-15	May-15	Jun-15	Aug-15	Sep-15
4 Re-presentation Rates	Opiate	10.50%	20.94%	22.90%	21.10%	25.00%
	Non Opiate	4.20%	9.96%	6.70%	5.60%	0.00%

Commentary

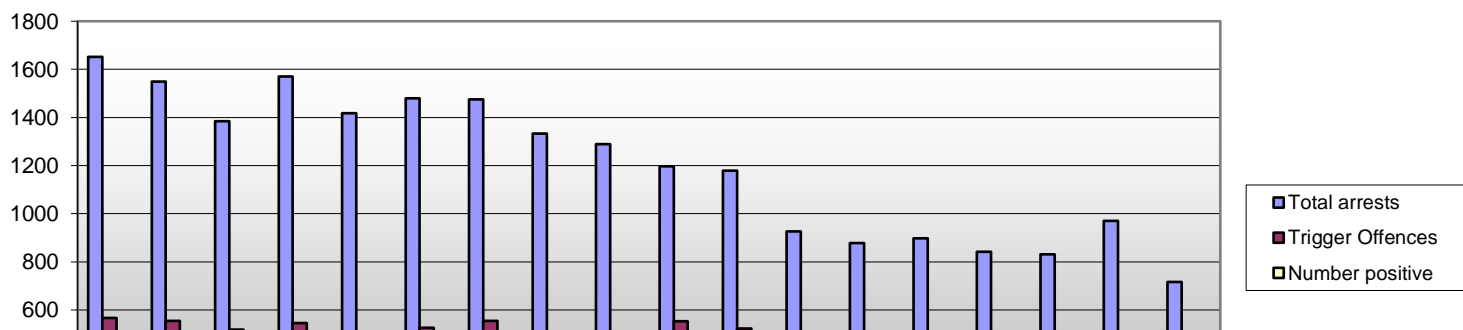
These figures have a six month delay in order to measure re-presentations and therefore don't fully reflect current working practice. Planned treatment exits have leveled off after strong growth in Q4. Non opiate numbers have also tapered off and are stable, reflecting a dip in referral numbers. Representations have returned to normal following a brief spell of very high performance achieved in the second half of 2014/15.

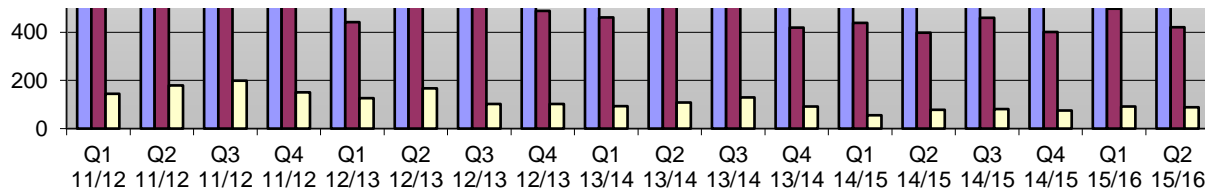
		Q1 14/15	Q2 14/15	Q3 14/15	Q4 14/15	Q1 15/16	Q2 15/16
5 Arrest Referral	Total arrests	878	897	842	831	970	716
	Drugs						
	Trigger Offences	437	399	460	402	466	422
	% of total arrests	50%	44%	55%	48%	48%	59%
	Additional tests due to inspector discretion	0	0	2	0	0	1
	Number of tests completed	118	194	185	134	170	143
	Tot Number testing Positive*	55	78	81	75	92	89
	% Positive	47%	40%	44%	56%	54%	62%
	Total Clients Referred	55	78	81	75	92	89

*opiate or cocaine only

There has been a significant reduction in the number of arrests in Q2. despite the 26% fall the number of arrests for trigger offences has only reduced by 9.4%. Drug test numbers remain comparable to the number of trigger offence arrests but the proportion of those tests that are positive continues to fluctuate significantly. In Q2 2015/16, the number and percentage of tests that were positive was high relative to the number of trigger offences and subsequent tests. Only 23 of the 89 positive tests were for cocaine. The remainder were either opiate only (34) or for both opiates and cocaine (32). it is highly likely that those testing positive for opiates are already known to the treatment services.

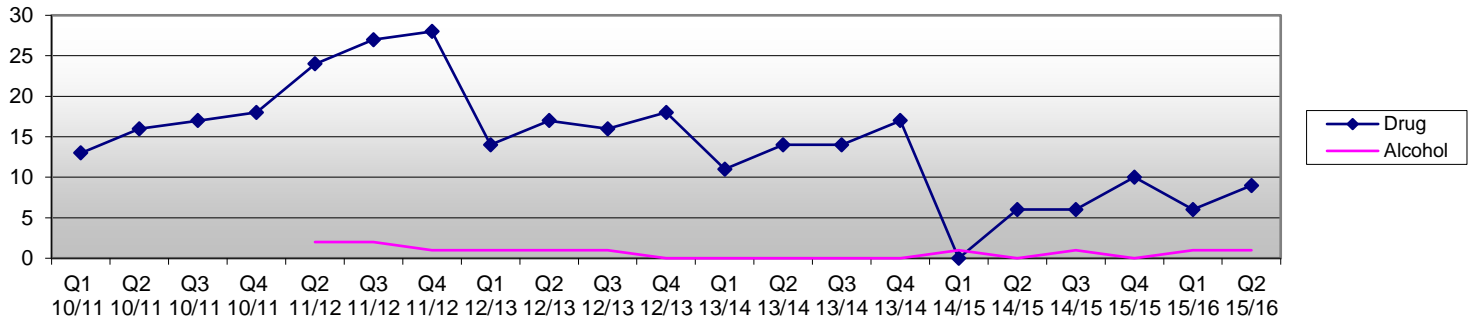
Drug related arrest data





		Q1 14/15	Q2 14/15	Q3 14/15	Q4 14/15	Q1 15/16	Q2 15/16
6 18yr olds in Treatment	Drug treatment	0	6	6	10	6	9
	Alcohol Treatment	1	0	1	0	1	1
	Successful alcohol discharges	0	0	0	0	0	0

numbers of 18 yr. olds in treatment



18 yr. Olds - This data shows a cumulative year to date figure for 18yr olds in treatment. We would therefore expect a drop at the beginning of each new year for Q1 but this was not seen at the start of 2011/12 giving rise to concern. Last year the numbers returned to normal levels suggesting an error in the reported data. Numbers have remained low and stable and in there is one client in alcohol treatment. All nine drug clients are non-opiate clients. Two clients are with the young peoples service and have been retained in that service due to their particular vulnerabilities.

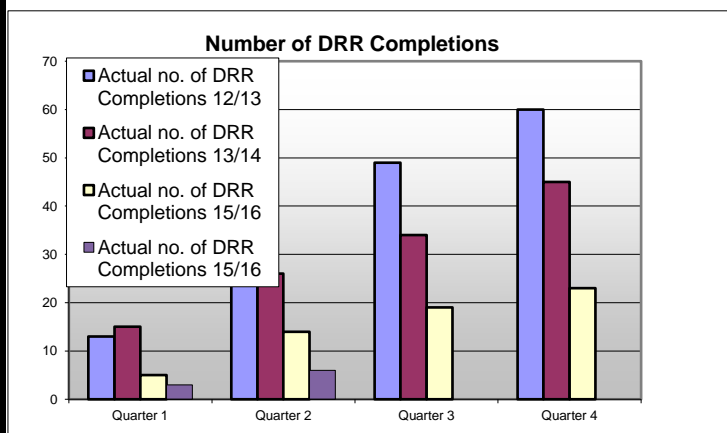
7 Housing Needs

number of new entrants that have a housing problem
 new entrants that are NFA
 percentage of new entrants that have a housing need
 percentage of new entrants that are NFA

	Q2 14/15	Q3 14/15	Q4 14/15	Q1 15/16	Q2 15/16
number of new entrants that have a housing problem	67	74	112	25	53
new entrants that are NFA	14	19	23	12	27
percentage of new entrants that have a housing need	14.2%	19.6%	12.9%	12.1%	12.9%
percentage of new entrants that are NFA	2.5%	4.5%	2.6%	5.8%	6.6%

This is reported as a cumulative figure YTD and therefore Q2 2015/16 should be compared with Q2 of the previous year. the ratio of those having a housing problem are affected the ever changing proportion of opiate and non-opiate clients entering or re-entering treatment. Overall numbers with housing problems are down but the proportion that are NFA has risen sharply over the last two quarters.

9 Drug Rehabilitation requirements (DRR)

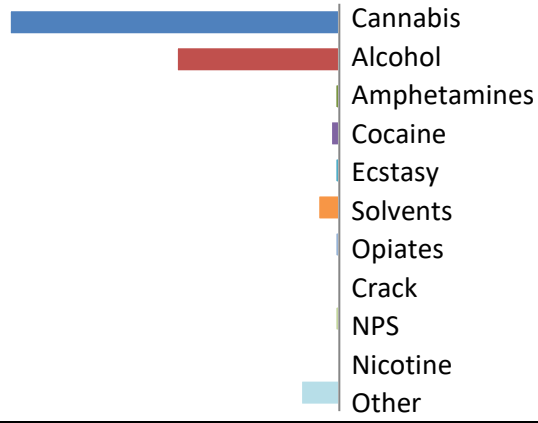


There are no numerical target for DRR completions for 2013/14 and 2014/15. The previous two years are provided for comparison.

Work is on-going with the newly created CRC and treatment providers to improve the targeting and management of the referral process. It is hoped that there will be an increase in orders but increased challenge and requirement to engage in structured treatment could increase breach activity with an impact on completion rates. The first two quarters show that there have been 3 completions per quarter this year.

10 Young People

	Q1 14/15	Q2 14/15	Q3 14/15	Q4 14/15	Q1 15/16	Q2 15/16
Young people in services, rolling 12 months	102	87	73	101	107	111
Young people in services, year to date	38	53	71	101	77	89
New presentations of young people, year to date	19	34	52	82	17	29
number of planned discharges (YTD)	7	14	21	32	20	28
percentage of discharges that are planned	78%	93%	91%	86%	77%	70%



Substances

The rolling number of young people in treatment continues to rise however turnover has improved with fewer long-term clients. The problematic substances remain fairly consistent with the majority reporting cannabis and/or alcohol use.